



**Ohio**

30396 Lakeland Blvd.  
Wickliffe, OH 44092

**Pennsylvania**

980 Hemlock Road  
Morgantown, PA 19543

**Indiana**

1 Arnolt Dr.  
Pierceton, IN 46562

**Nevada**

2180 E. Warm Springs Rd.  
Suite 1152  
Las Vegas, NV 89119-0438

[www.omcoform.com](http://www.omcoform.com)



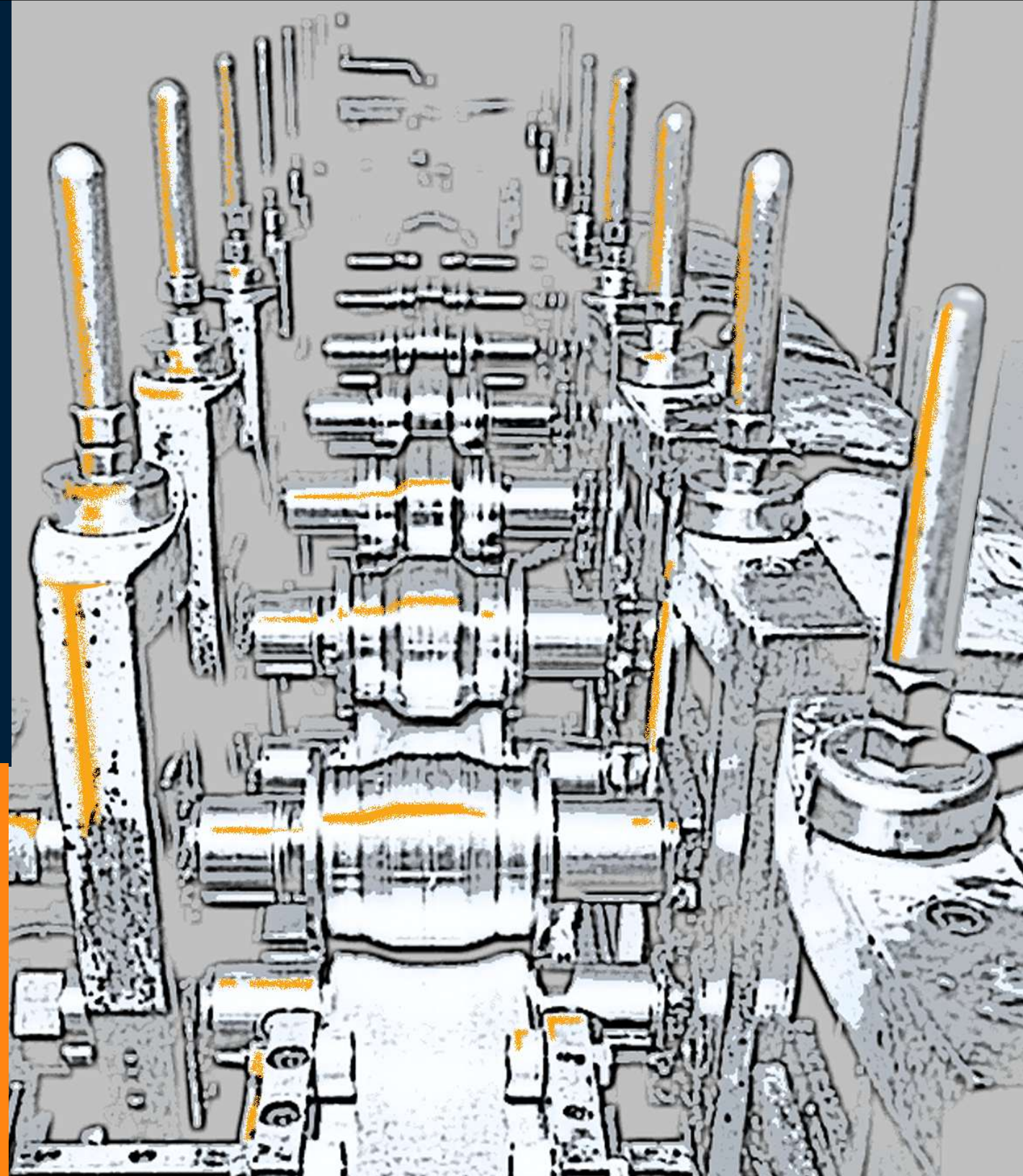
**Standard &  
Custom  
Roll-Formed  
Shapes**



For over 50 years OMCO has been recognized as one of the largest producers of roll-formed steel shapes in the world. Diverse industries across the globe depend on us for prompt fulfillment of their roll-formed product needs.

The structural shapes you will find in this catalog represent our standard line of roll-form shapes used in the trailer and truck-body industries. All of the shapes listed are produced using existing tooling, offering our customers a decided cost advantage. Additional parts exist so contact your factory sales rep for a full product line.

We also supply secondary and finishing operations including piercing, slotting, forming and notching, allowing us to fulfill your needs with a quality completed part. We can roll-form metals up to .375 inch thickness, widths to 30 inches, with any length available.



Serving the  
Transportation Industry  
for over 50 Years

Quality

Delivery

Engineering Capabilities

Multiple Locations

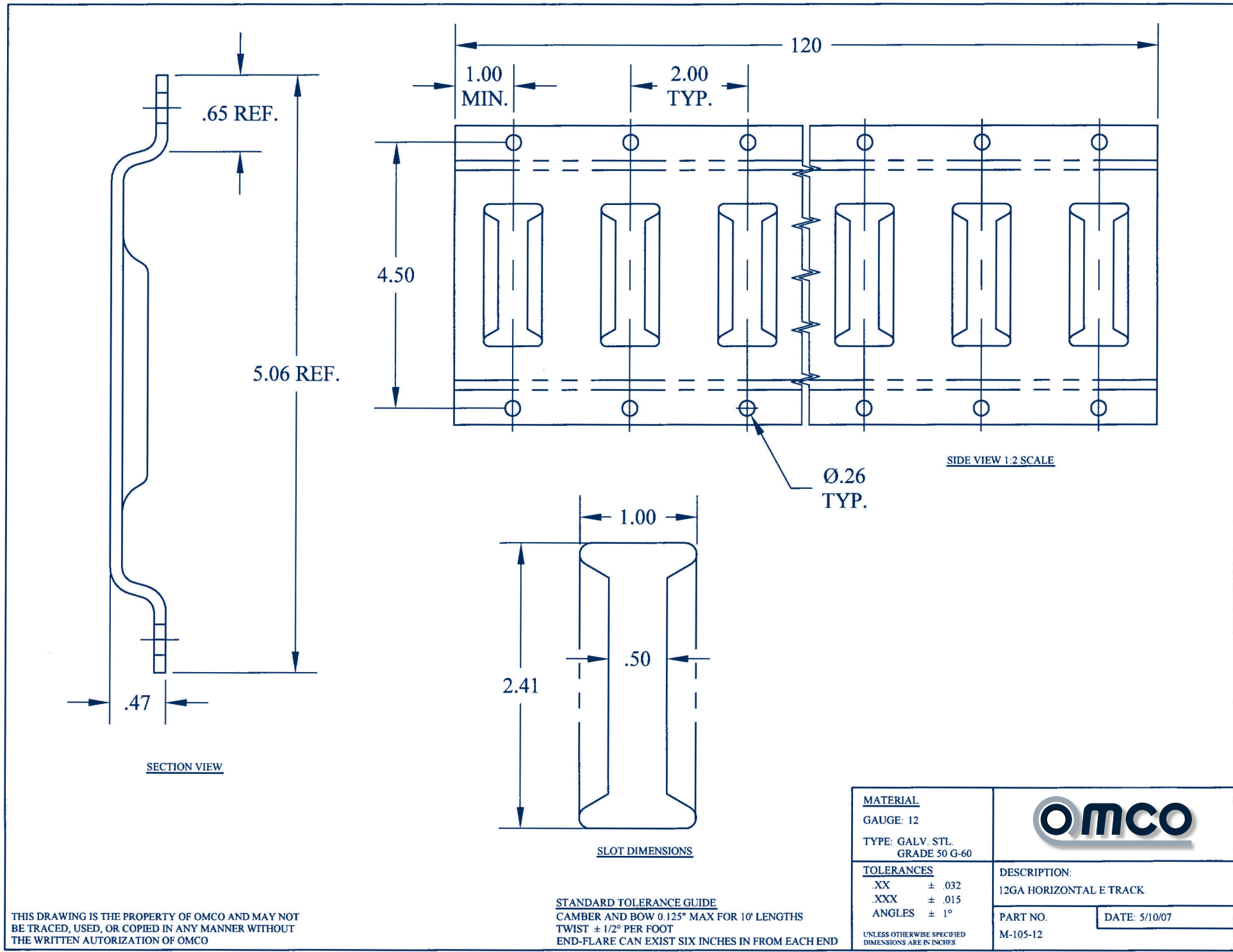


**Roll Forming Excellence**

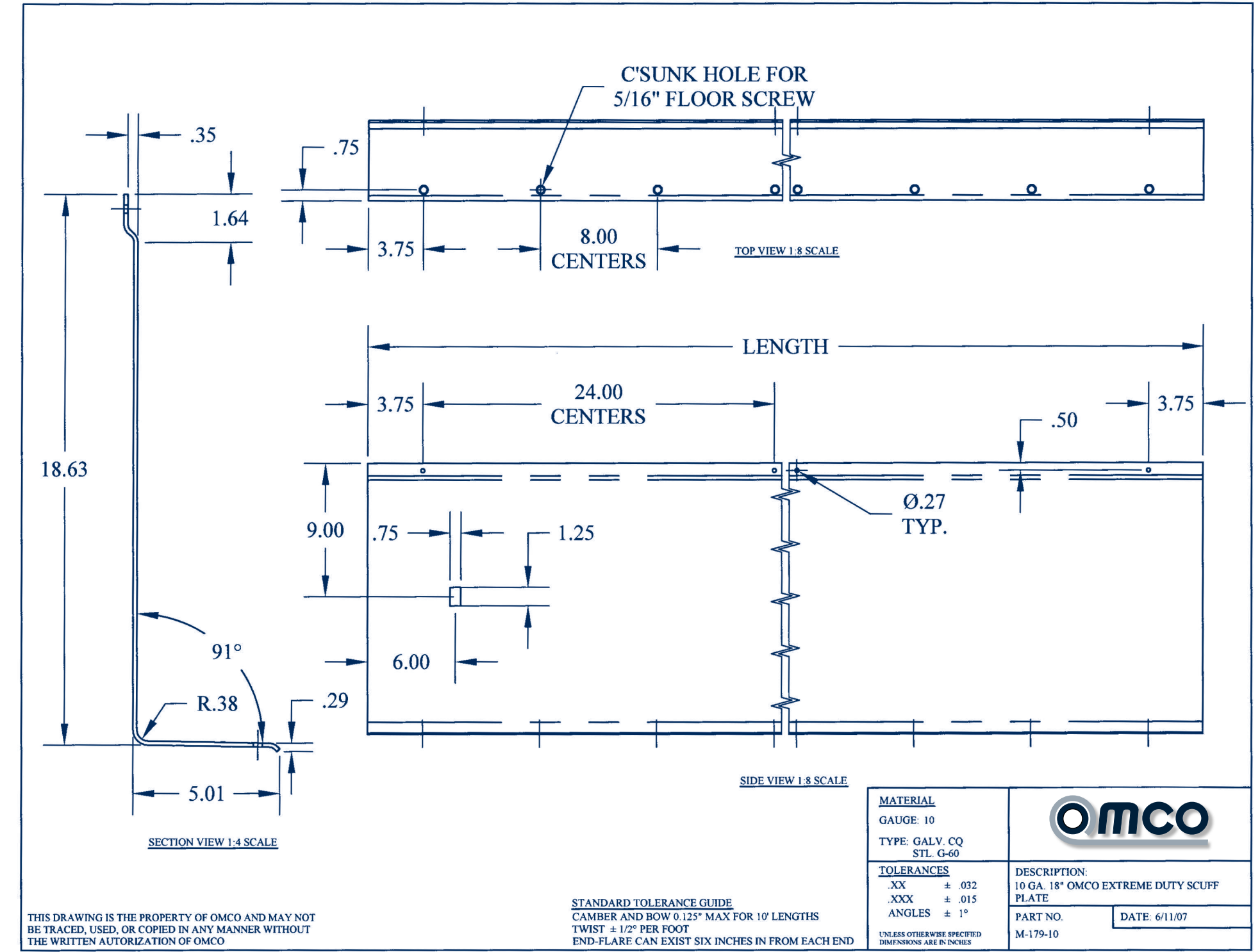
## Contents

|  |    |
|--|----|
| 12 Gauge Horizontal E Track .....            | 2  |
| 14 Gauge Horizontal F Track .....            | 3  |
| 12 Gauge Vertical E Track .....              | 4  |
| 16 and 18 Gauge 1 3/8" Z Post, Pierced ..... | 5  |
| 16 Gauge 13/16" Z Post, Pierced .....        | 6  |
| 16 Gauge Hat Post, Pierced .....             | 7  |
| 14 Gauge Double E Post .....                 | 8  |
| 14 Gauge Logistic A Post .....               | 9  |
| 16 Gauge Walk Ramp Channel .....             | 10 |
| 16 and 18 Gauge 1" Anti-Snag Roof Bow ....   | 11 |
| 12 Gauge Stake Body Post .....               | 12 |
| 16 Gauge Slat Liner Hemmed .....             | 13 |
| 18 Gauge Scuff Plate .....                   | 14 |
| 10 Gauge 18" OMCO Extreme Duty Scuff ...     | 15 |

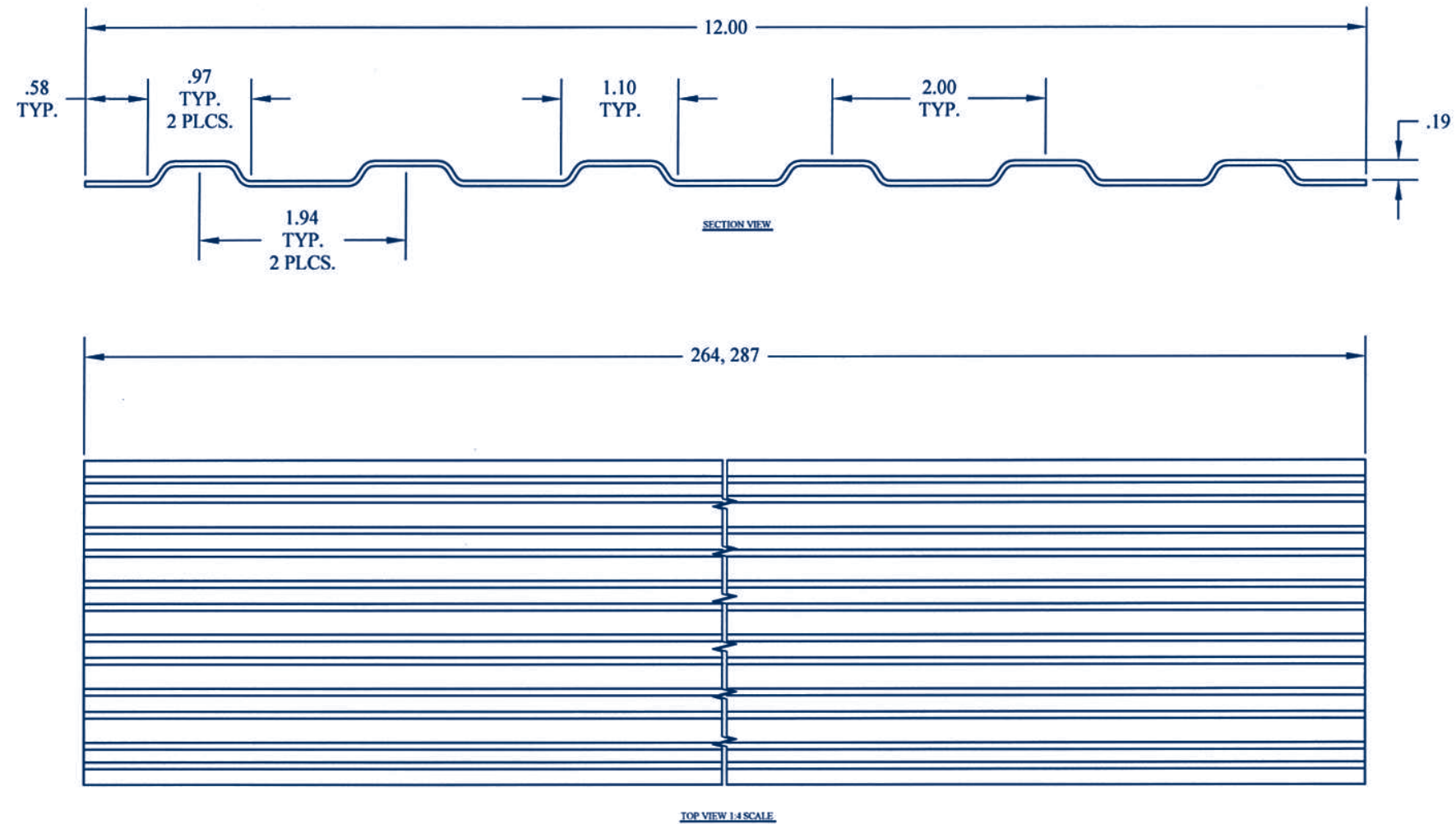
This catalog represents our Off the Shelf line. We have engineers on staff to take care of your custom needs.



THIS DRAWING IS THE PROPERTY OF OMCO AND MAY NOT BE TRACED, USED, OR COPIED IN ANY MANNER WITHOUT THE WRITTEN AUTHORIZATION OF OMCO



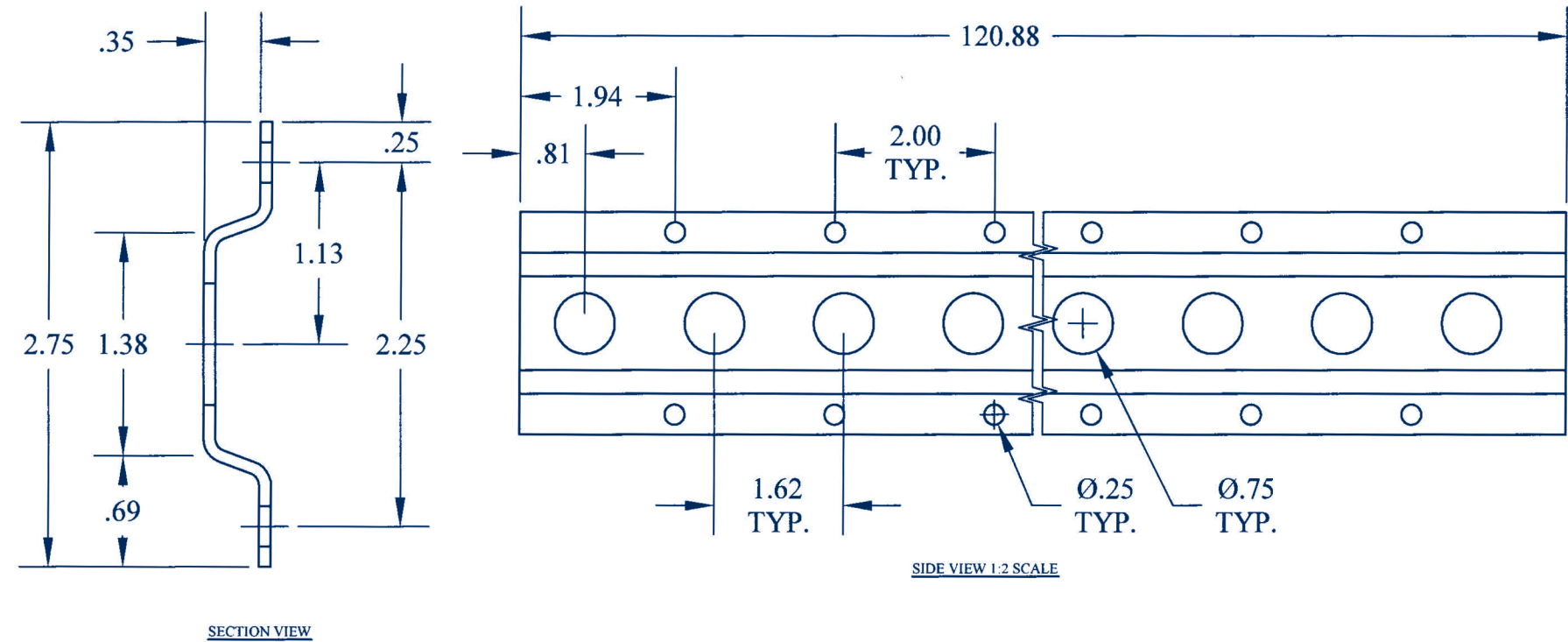
THIS DRAWING IS THE PROPERTY OF OMCO AND MAY NOT BE TRACED, USED, OR COPIED IN ANY MANNER WITHOUT THE WRITTEN AUTHORIZATION OF OMCO



THIS DRAWING IS THE PROPERTY OF OMCO AND MAY NOT BE TRACED, USED, OR COPIED IN ANY MANNER WITHOUT THE WRITTEN AUTHORIZATION OF OMCO

STANDARD TOLERANCE GUIDE  
CAMBER AND BOW 0.125" MAX FOR 10' LENGTHS  
TWIST ± 1/2° PER FOOT  
END-FLARE CAN EXIST SIX INCHES IN FROM EACH END

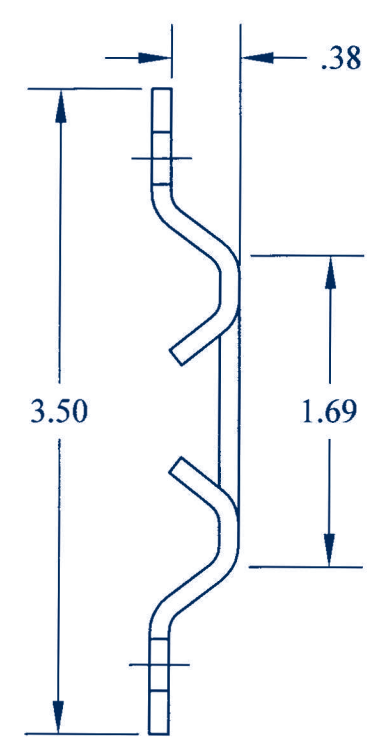
|   |  |   |
|---|--|---|
| <b>MATERIAL</b><br>GAUGE: 18<br>TYPE: GALV. STL.<br>GRADE 80 G-60 |  | <b>DESCRIPTION:</b><br>18GA SCUFF PLATE |
| <b>TOLERANCES</b><br>.XX ± .032<br>.XXX ± .015<br>ANGLES ± 1°     |  | <b>PART NO.</b><br>M-126-18             |
|   |  | <b>DATE:</b> 5/10/07                    |



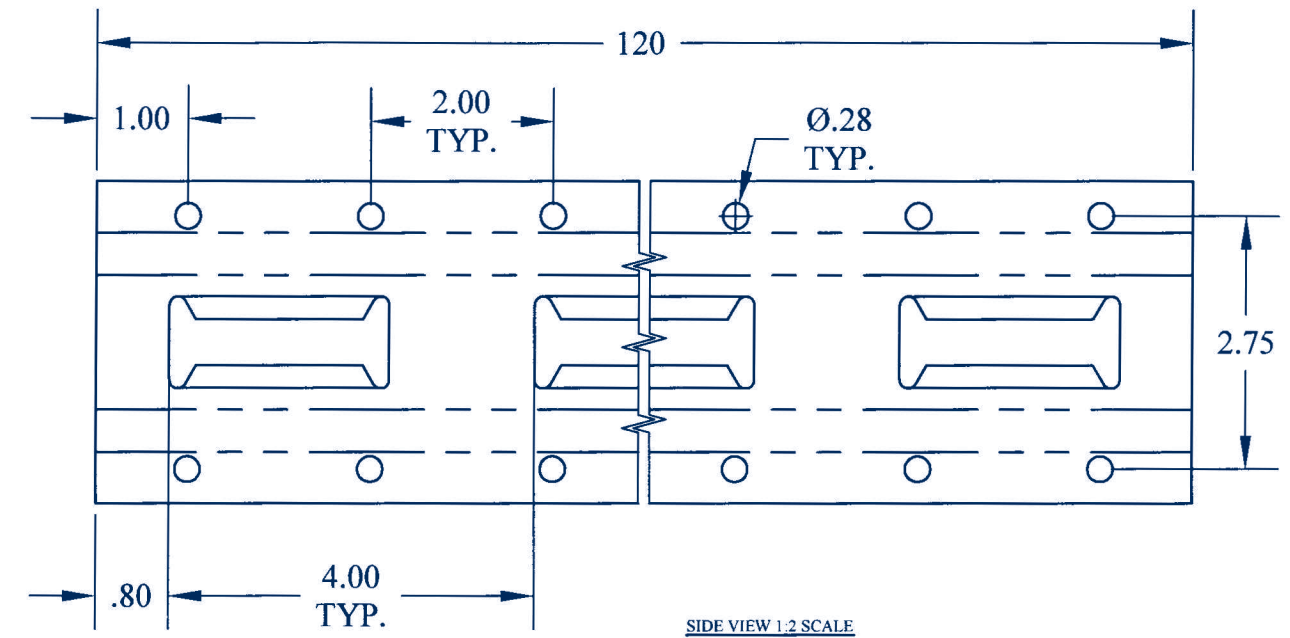
THIS DRAWING IS THE PROPERTY OF OMCO AND MAY NOT BE TRACED, USED, OR COPIED IN ANY MANNER WITHOUT THE WRITTEN AUTHORIZATION OF OMCO

STANDARD TOLERANCE GUIDE  
CAMBER AND BOW 0.125" MAX FOR 10' LENGTHS  
TWIST ± 1/2° PER FOOT  
END-FLARE CAN EXIST SIX INCHES IN FROM EACH END

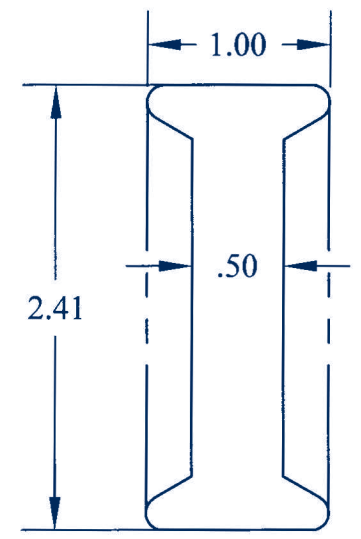
|   |  |  |
|---|--|--|
| <b>MATERIAL</b><br>GAUGE: 14<br>TYPE: GALV. STL.<br>GRADE 50 G-60 |  | <b>DESCRIPTION:</b><br>14GA HORIZONTAL F TRACK |
| <b>TOLERANCES</b><br>.XX ± .032<br>.XXX ± .015<br>ANGLES ± 1°     |  | <b>PART NO.</b><br>M-121-14                    |
|   |  | <b>DATE:</b> 5/10/07                           |



SECTION VIEW



SIDE VIEW 1:2 SCALE

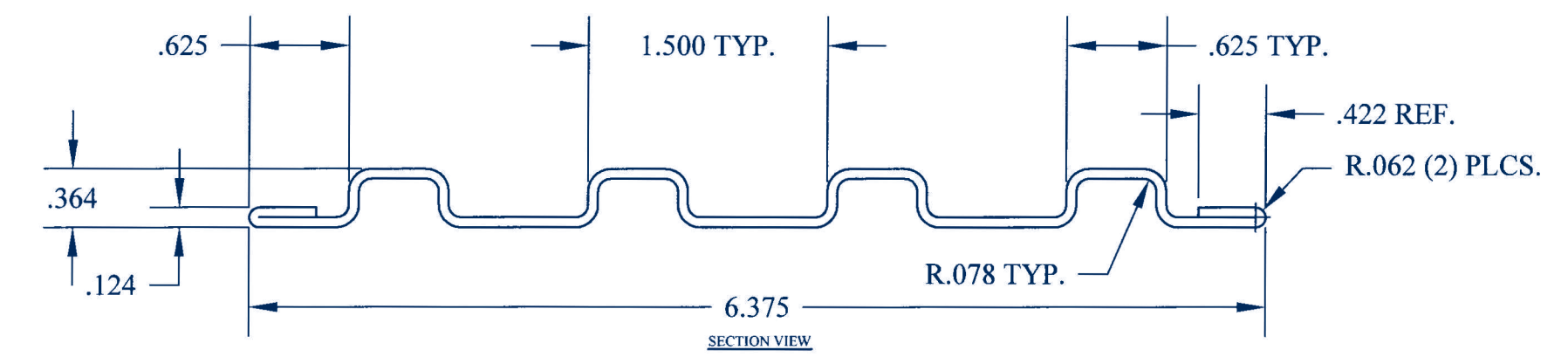


SLOT DIMENSIONS

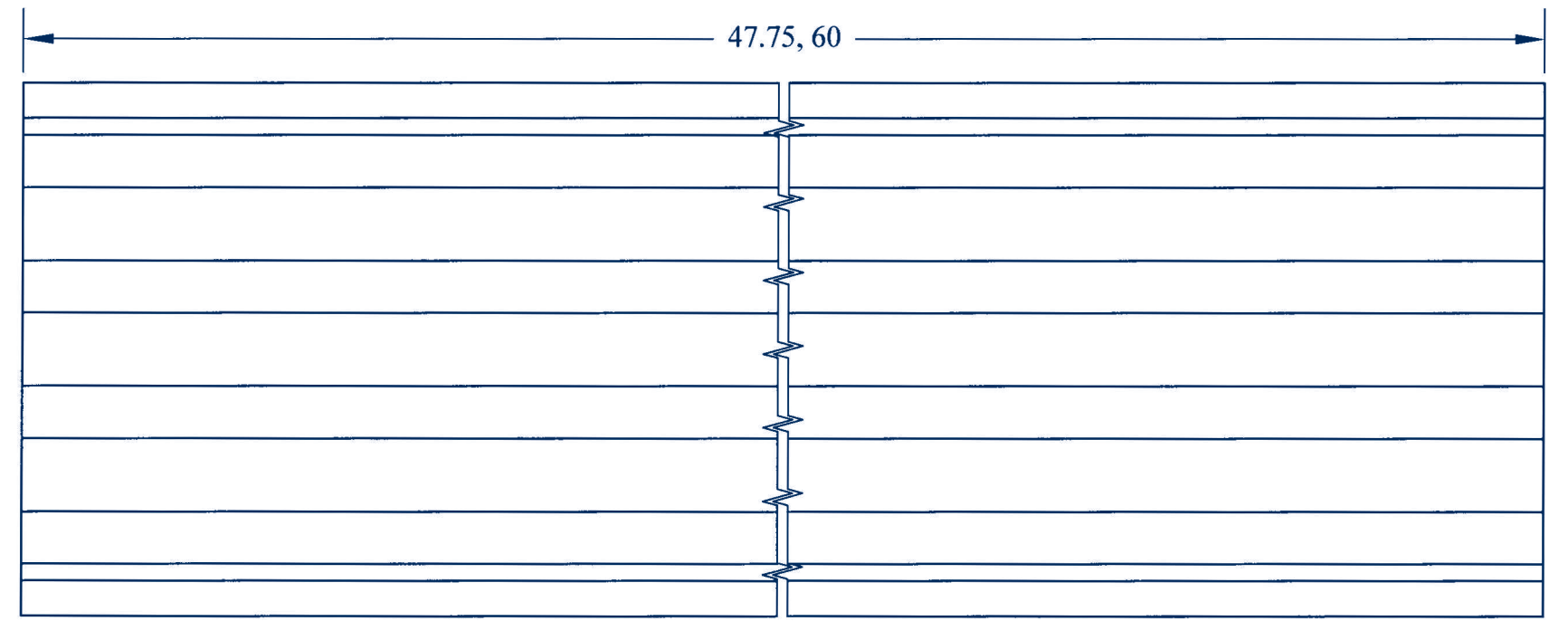
STANDARD TOLERANCE GUIDE  
 CAMBER AND BOW 0.125" MAX FOR 10' LENGTHS  
 TWIST ± 1/2° PER FOOT  
 END-FLARE CAN EXIST SIX INCHES IN FROM EACH END

|  |  |                                       |
|--|--|---------------------------------------|
| <b>MATERIAL</b><br>GAUGE: 12<br>TYPE: GALV. STL.<br>GRADE 50 G-60  |  |                                       |
| <b>TOLERANCES</b><br>.XX ± .032<br>.XXX ± .015<br>ANGLES ± 1°      |  |                                       |
| DESCRIPTION:<br>12 GA VERTICAL E TRACK                             |  | PART NO. T-3439-12      DATE: 5/10/07 |
| <small>UNLESS OTHERWISE SPECIFIED DIMENSIONS ARE IN INCHES</small> |  |                                       |

THIS DRAWING IS THE PROPERTY OF OMCO AND MAY NOT BE TRACED, USED, OR COPIED IN ANY MANNER WITHOUT THE WRITTEN AUTHORIZATION OF OMCO



SECTION VIEW

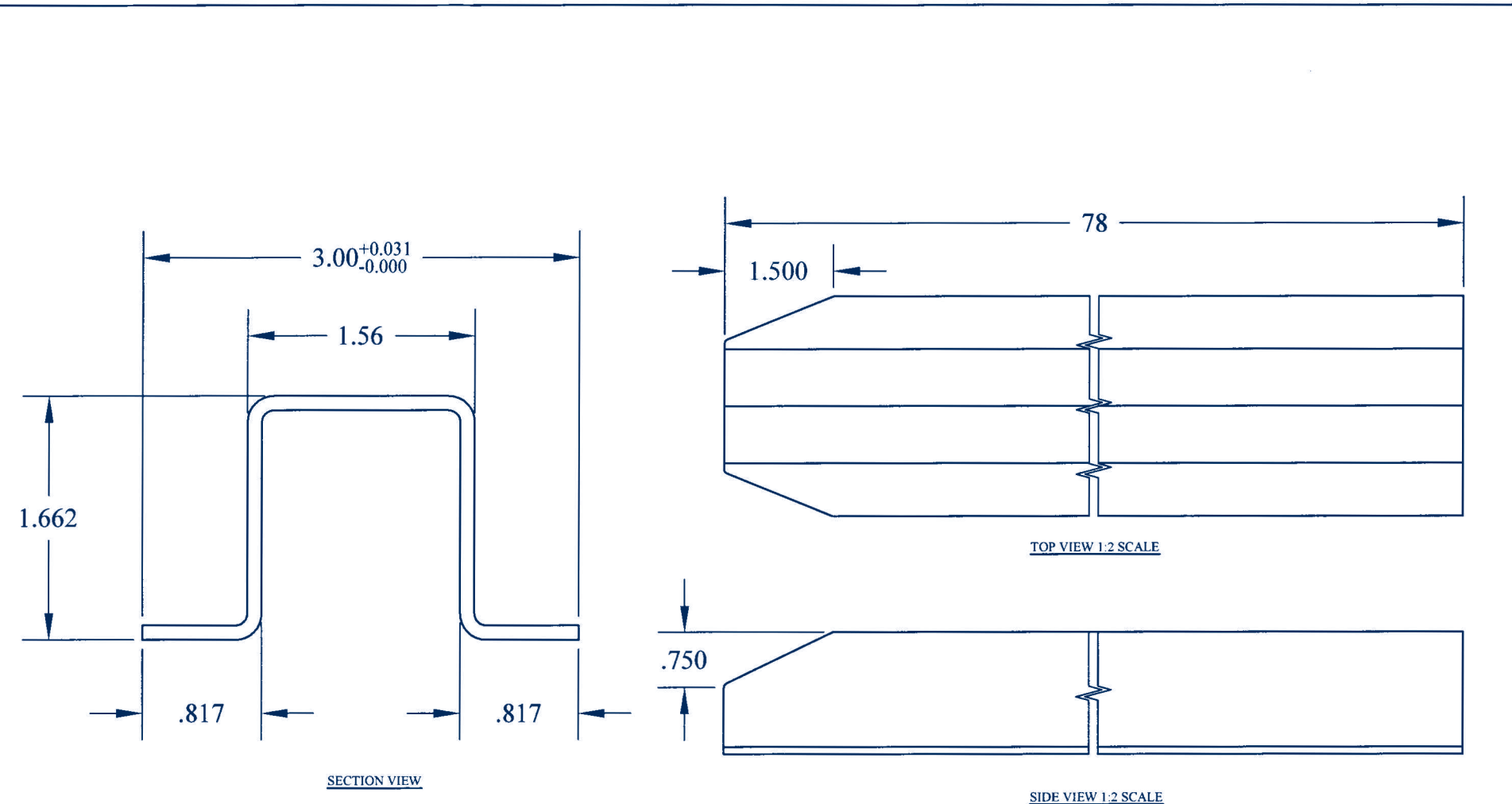


TOP VIEW 1:2 SCALE

STANDARD TOLERANCE GUIDE  
 CAMBER AND BOW 0.125" MAX FOR 10' LENGTHS  
 TWIST ± 1/2° PER FOOT  
 END-FLARE CAN EXIST SIX INCHES IN FROM EACH END

|  |  |                                       |
|--|--|---------------------------------------|
| <b>MATERIAL</b><br>GAUGE: 16<br>TYPE: GALVANNEALED<br>CQ STL. A-40 |  |                                       |
| <b>TOLERANCES</b><br>.XX ± .032<br>.XXX ± .015<br>ANGLES ± 1°      |  |                                       |
| DESCRIPTION:<br>16GA HEMMED SLAT LINER                             |  | PART NO. T-149A-16      DATE: 5/10/07 |
| <small>UNLESS OTHERWISE SPECIFIED DIMENSIONS ARE IN INCHES</small> |  |                                       |

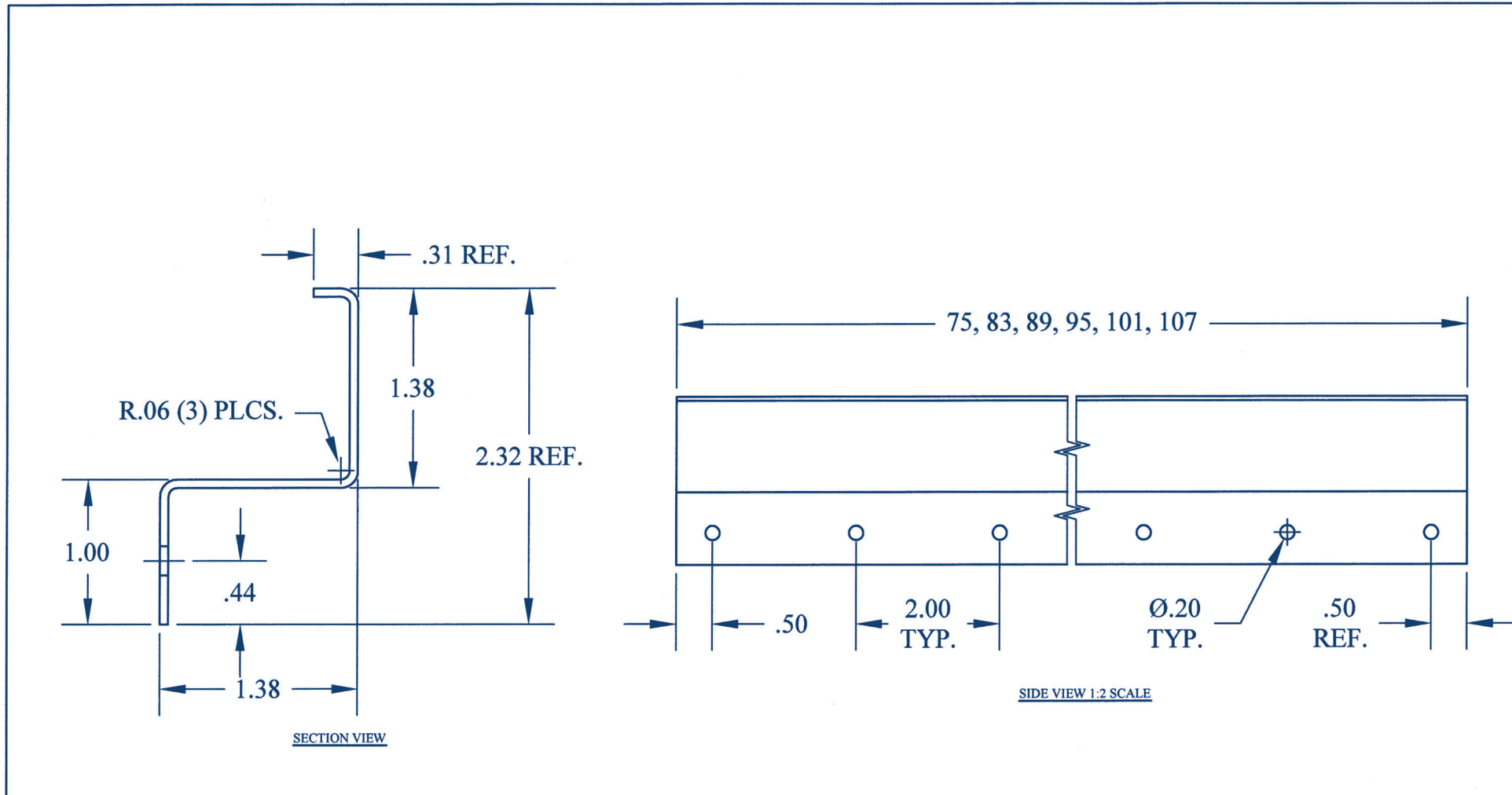
THIS DRAWING IS THE PROPERTY OF OMCO AND MAY NOT BE TRACED, USED, OR COPIED IN ANY MANNER WITHOUT THE WRITTEN AUTHORIZATION OF OMCO



THIS DRAWING IS THE PROPERTY OF OMCO AND MAY NOT BE TRACED, USED, OR COPIED IN ANY MANNER WITHOUT THE WRITTEN AUTHORIZATION OF OMCO

STANDARD TOLERANCE GUIDE  
CAMBER AND BOW 0.125" MAX FOR 10' LENGTHS  
TWIST ± 1/2° PER FOOT  
END-FLARE CAN EXIST SIX INCHES IN FROM EACH END

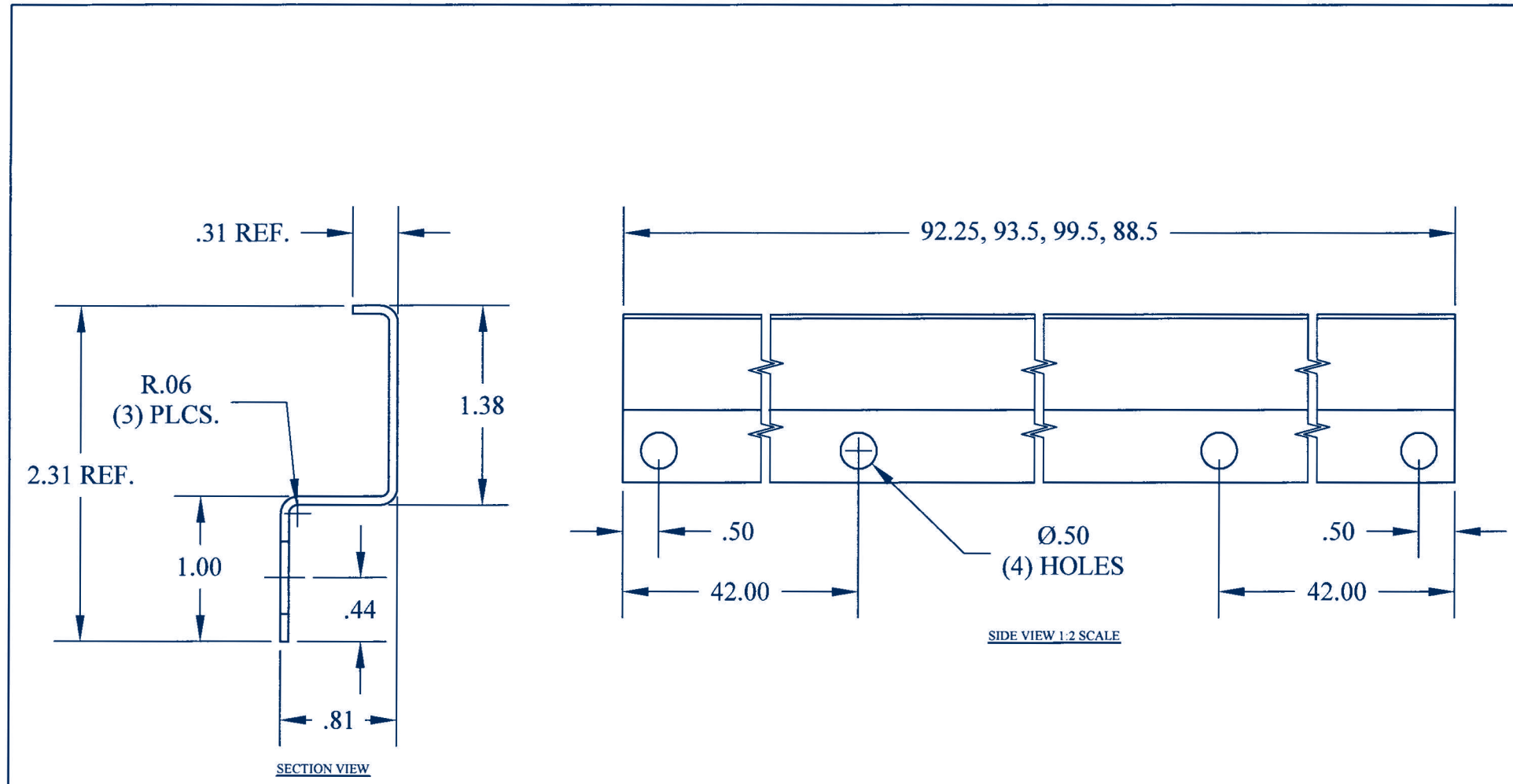
|  |                    |
|--|--------------------|
| MATERIAL<br>GAUGE: 12<br>TYPE: GALV. CQ<br>STL. G-60   |                    |
| DESCRIPTION:<br>12GA STAKE BODY POST                   |                    |
| TOLERANCES<br>.XX ± .032<br>.XXX ± .015<br>ANGLES ± 1° | PART NO. T-3290-12 |
| UNLESS OTHERWISE SPECIFIED<br>DIMENSIONS ARE IN INCHES | DATE: 5/10/07      |



THIS DRAWING IS THE PROPERTY OF OMCO AND MAY NOT BE TRACED, USED, OR COPIED IN ANY MANNER WITHOUT THE WRITTEN AUTHORIZATION OF OMCO

STANDARD TOLERANCE GUIDE  
CAMBER AND BOW 0.125" MAX FOR 10' LENGTHS  
TWIST ± 1/2° PER FOOT  
END-FLARE CAN EXIST SIX INCHES IN FROM EACH END

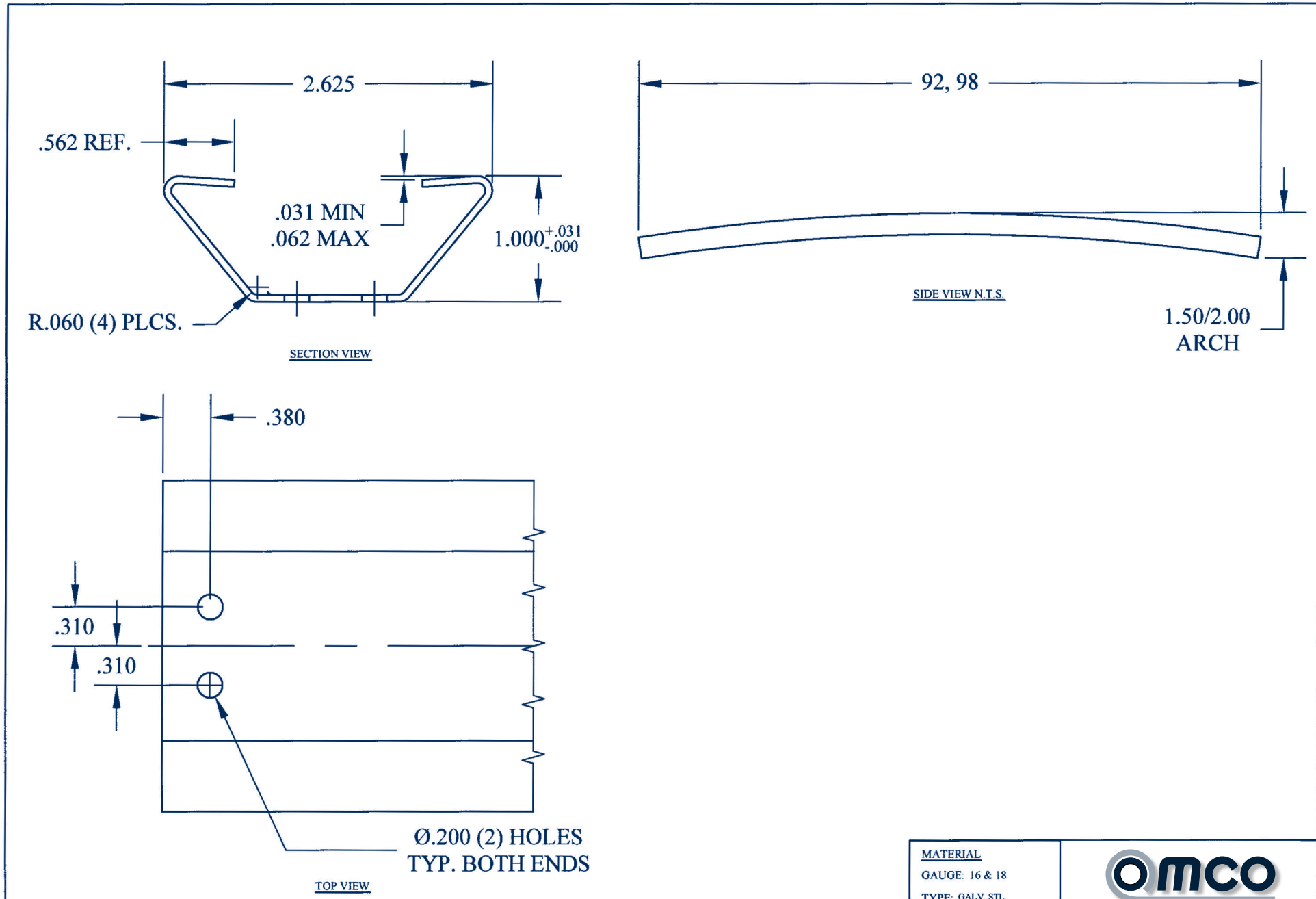
|  |                   |
|--|-------------------|
| MATERIAL<br>GAUGE: 16 & 18<br>TYPE: GALV. CQ<br>STL. G-60                  |                   |
| DESCRIPTION:<br>16GA 1 3/8" Z POST, PIERCED<br>18GA 1 3/8" Z POST, PIERCED |                   |
| TOLERANCES<br>.XX ± .032<br>.XXX ± .015<br>ANGLES ± 1°                     | PART NO. T-108-16 |
| UNLESS OTHERWISE SPECIFIED<br>DIMENSIONS ARE IN INCHES                     | DATE: 5/10/07     |



THIS DRAWING IS THE PROPERTY OF OMCO AND MAY NOT BE TRACED, USED, OR COPIED IN ANY MANNER WITHOUT THE WRITTEN AUTHORIZATION OF OMCO

STANDARD TOLERANCE GUIDE  
CAMBER AND BOW 0.125" MAX FOR 10' LENGTHS  
TWIST ± 1/2° PER FOOT  
END-FLARE CAN EXIST SIX INCHES IN FROM EACH END

|  |               |
|--|---------------|
| MATERIAL<br>GAUGE: 16<br>TYPE: GALV. CQ<br>STL. G-60   |               |
| TOLERANCES<br>.XX ± .032<br>.XXX ± .015<br>ANGLES ± 1° |               |
| DESCRIPTION:<br>16GA 13/16" Z POST PIERCED             |               |
| PART NO. T-115-16                                      | DATE: 5/10/07 |

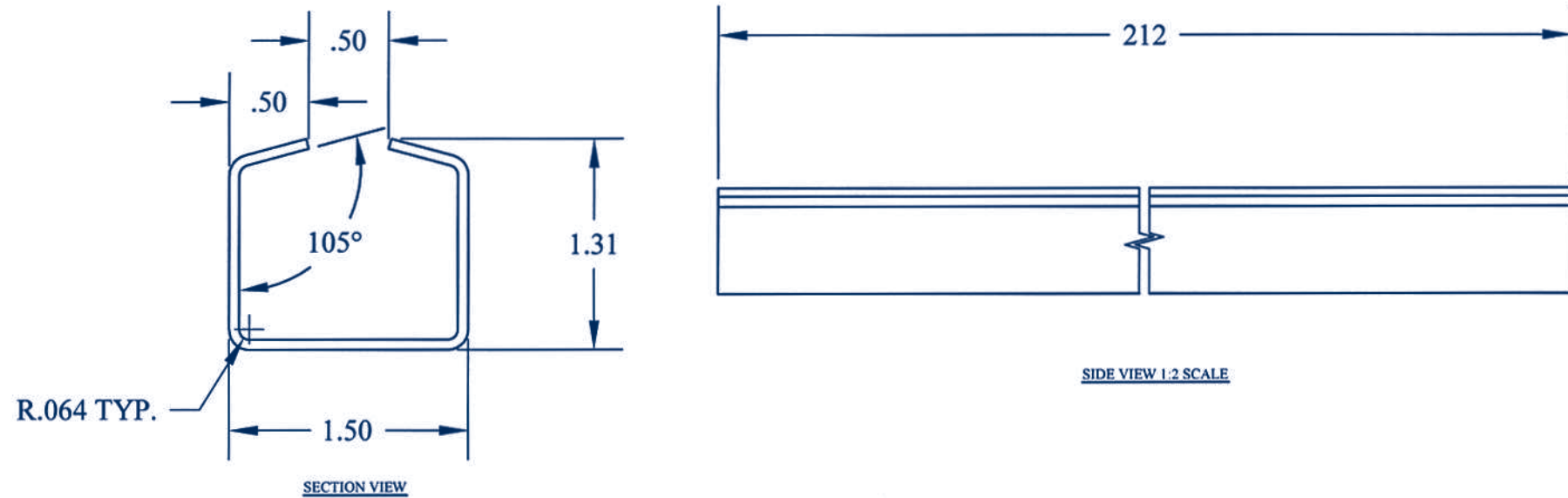


THIS DRAWING IS THE PROPERTY OF OMCO AND MAY NOT BE TRACED, USED, OR COPIED IN ANY MANNER WITHOUT THE WRITTEN AUTHORIZATION OF OMCO

STANDARD TOLERANCE GUIDE  
CAMBER AND BOW 0.125" MAX FOR 10' LENGTHS  
TWIST ± 1/2° PER FOOT  
END-FLARE CAN EXIST SIX INCHES IN FROM EACH END

|  |               |
|--|---------------|
| MATERIAL<br>GAUGE: 16 & 18<br>TYPE: GALV. STL.<br>GRADE 50 G-60      |               |
| TOLERANCES<br>.XX ± .032<br>.XXX ± .015<br>ANGLES ± 1°               |               |
| DESCRIPTION:<br>16GA 1" ANTISNAG ROOFBOW<br>18GA 1" ANTISNAG ROOFBOW |               |
| PART NO. T-123A-16   | DATE: 5/10/07 |





R.064 TYP.

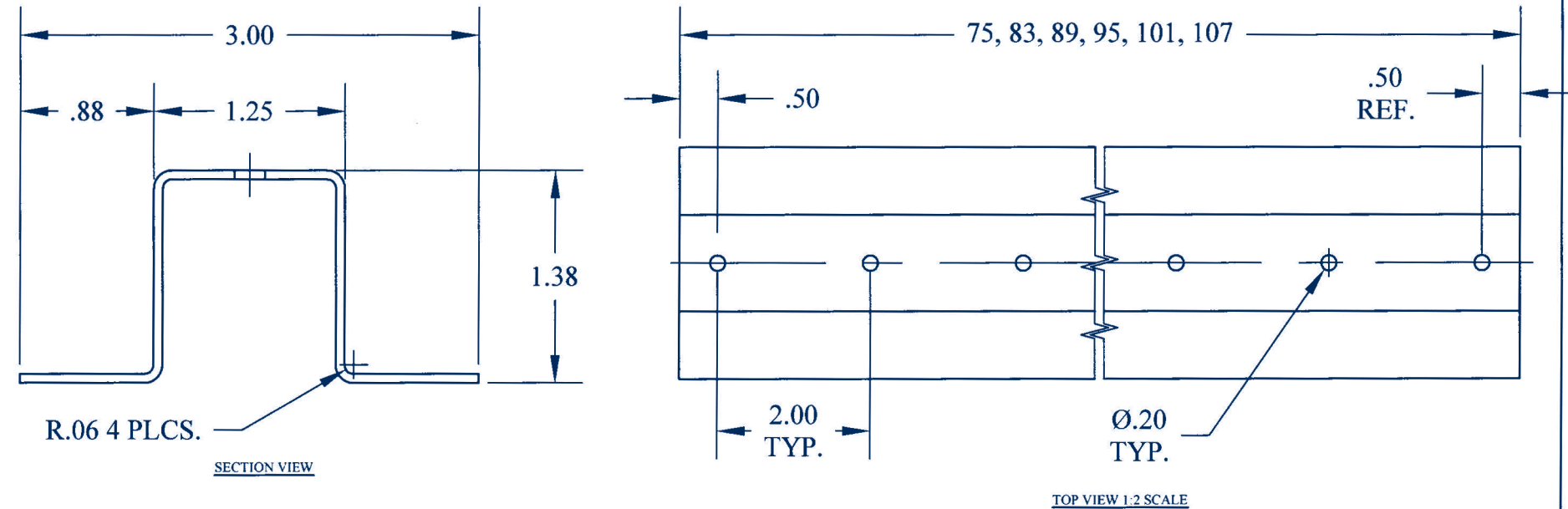
SECTION VIEW

SIDE VIEW 1:2 SCALE

STANDARD TOLERANCE GUIDE  
 CAMBER AND BOW 0.125" MAX FOR 10' LENGTHS  
 TWIST ± 1/2° PER FOOT  
 END-FLARE CAN EXIST SIX INCHES IN FROM EACH END

|   |  |                      |               |   |  |
|---|--|----------------------|---------------|---|--|
| <b>MATERIAL</b><br>GAUGE: 16<br>TYPE: GALV. CQ<br>STL. G-60   |  |                      |               |   |  |
| <b>TOLERANCES</b><br>.XX ± .032<br>.XXX ± .015<br>ANGLES ± 1° |  |                      |               | <b>DESCRIPTION:</b><br>16GA WALK RAMP CHANNEL |  |
| UNLESS OTHERWISE SPECIFIED<br>DIMENSIONS ARE IN INCHES        |  | PART NO.<br>T-116-16 | DATE: 5/10/07 |   |  |

THIS DRAWING IS THE PROPERTY OF OMCO AND MAY NOT BE TRACED, USED, OR COPIED IN ANY MANNER WITHOUT THE WRITTEN AUTHORIZATION OF OMCO



R.06 4 PLCS.

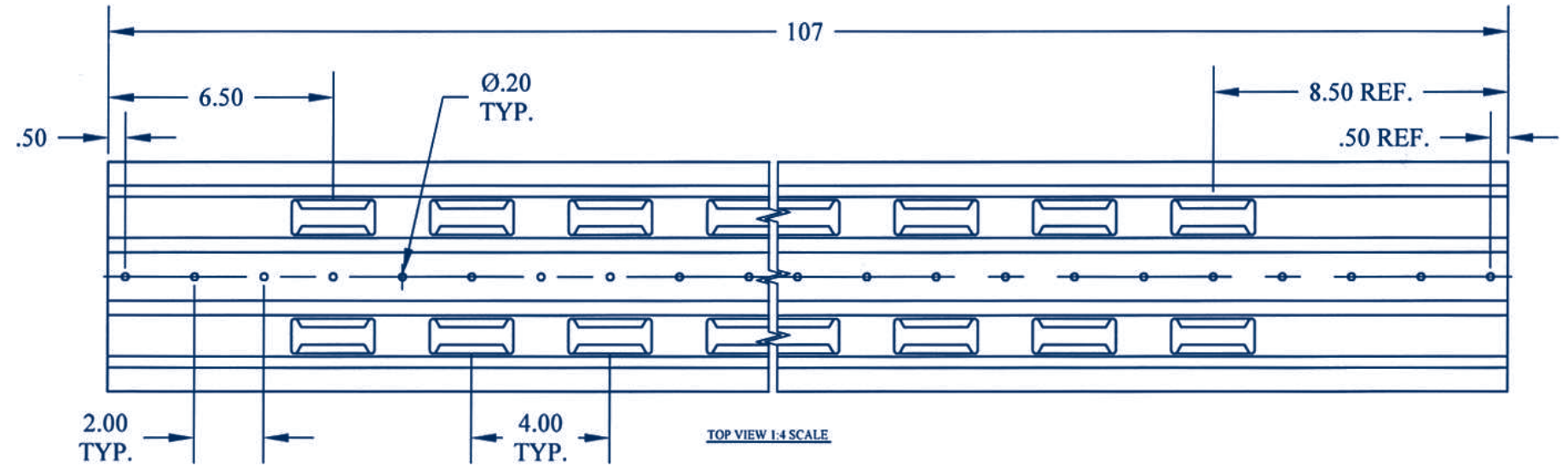
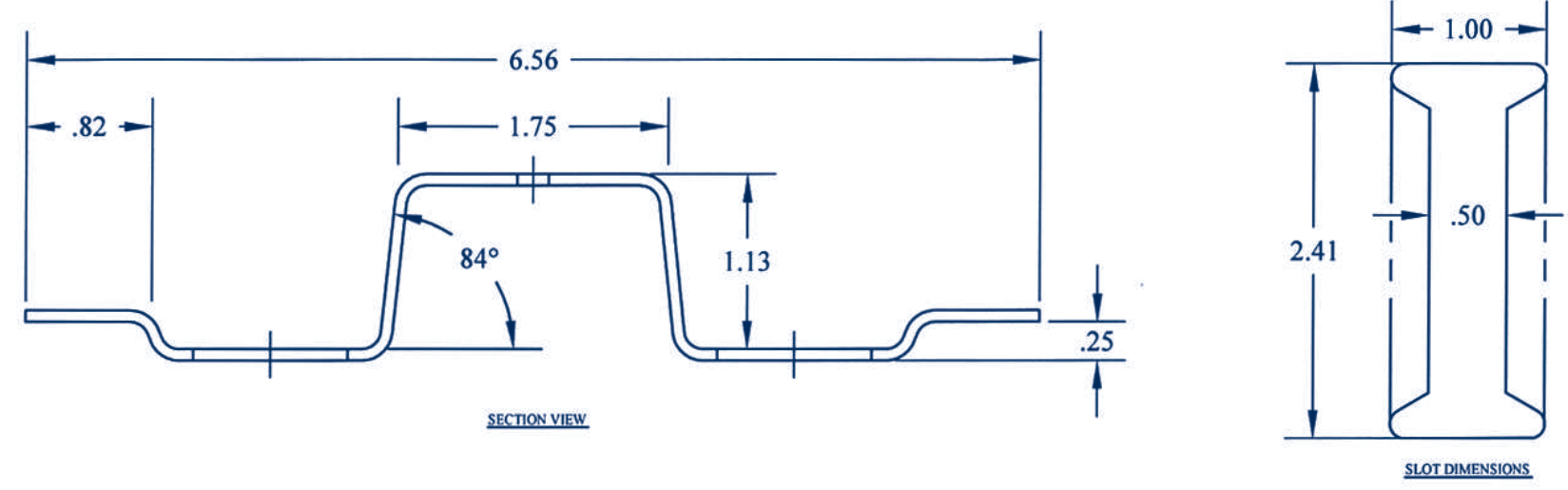
SECTION VIEW

TOP VIEW 1:2 SCALE

STANDARD TOLERANCE GUIDE  
 CAMBER AND BOW 0.125" MAX FOR 10' LENGTHS  
 TWIST ± 1/2° PER FOOT  
 END-FLARE CAN EXIST SIX INCHES IN FROM EACH END

|   |  |                      |               |  |  |
|---|--|----------------------|---------------|--|--|
| <b>MATERIAL</b><br>GAUGE: 16<br>TYPE: GALV. CQ<br>STL. G-60   |  |                      |               |  |  |
| <b>TOLERANCES</b><br>.XX ± .032<br>.XXX ± .015<br>ANGLES ± 1° |  |                      |               | <b>DESCRIPTION:</b><br>16GA HAT POST PIERCED |  |
| UNLESS OTHERWISE SPECIFIED<br>DIMENSIONS ARE IN INCHES        |  | PART NO.<br>T-109-16 | DATE: 5/10/07 |  |  |

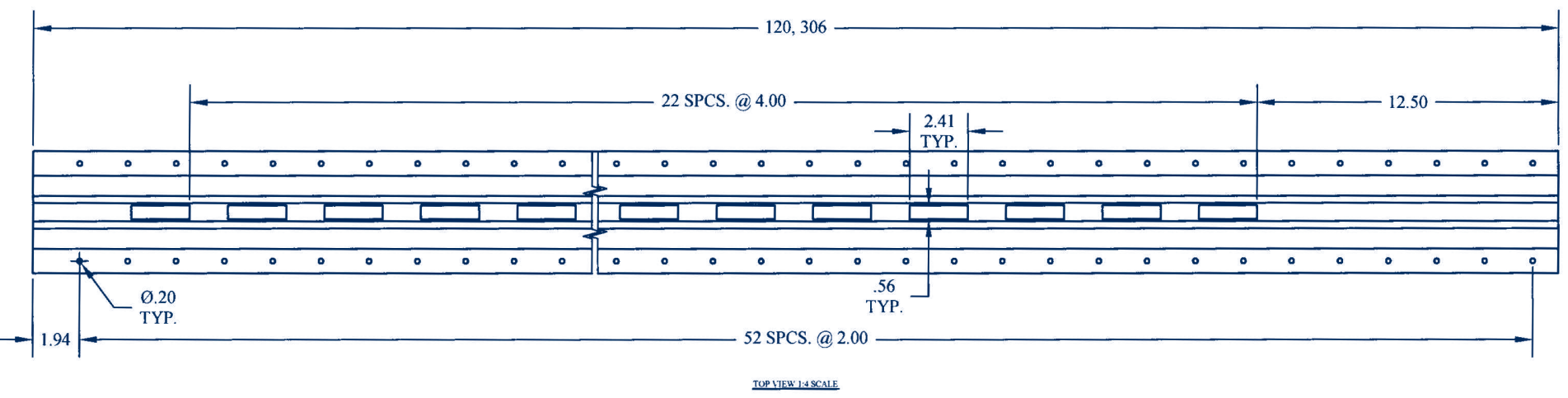
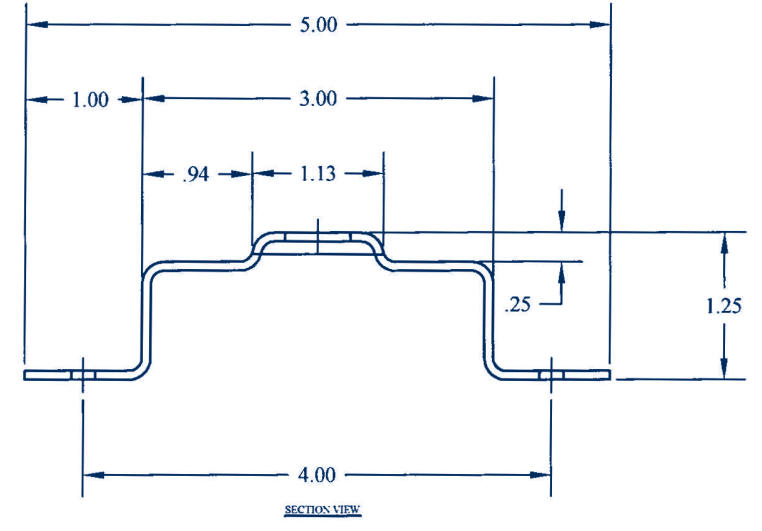
THIS DRAWING IS THE PROPERTY OF OMCO AND MAY NOT BE TRACED, USED, OR COPIED IN ANY MANNER WITHOUT THE WRITTEN AUTHORIZATION OF OMCO



|   |                      |
|---|----------------------|
| <b>MATERIAL</b><br>GAUGE: 14<br>TYPE: GALV. STL.<br>GRADE 50 G-60 |                      |
| <b>TOLERANCES</b><br>.XX ± .032<br>.XXX ± .015<br>ANGLES ± 1°     |                      |
| <b>DESCRIPTION:</b><br>14GA DOUBLE E POST                         | <b>DATE:</b> 5/23/07 |
| <b>PART NO.</b><br>T-3226-14                                      |                      |

STANDARD TOLERANCE GUIDE  
CAMBER AND BOW 0.125" MAX FOR 10' LENGTHS  
TWIST ± 1/2" PER FOOT  
END-FLARE CAN EXIST SIX INCHES IN FROM EACH END

THIS DRAWING IS THE PROPERTY OF OMCO AND MAY NOT BE TRACED, USED, OR COPIED IN ANY MANNER WITHOUT THE WRITTEN AUTHORIZATION OF OMCO



|   |                      |
|---|----------------------|
| <b>MATERIAL</b><br>GAUGE: 14<br>TYPE: GALV. STL.<br>GRADE 50 G-60 |                      |
| <b>TOLERANCES</b><br>.XX ± .032<br>.XXX ± .015<br>ANGLES ± 1°     |                      |
| <b>DESCRIPTION:</b><br>14GA LOGISTIC A POST                       | <b>DATE:</b> 5/10/07 |
| <b>PART NO.</b><br>M-159-14                                       |                      |

STANDARD TOLERANCE GUIDE  
CAMBER AND BOW 0.125" MAX FOR 10' LENGTHS  
TWIST ± 1/2" PER FOOT  
END-FLARE CAN EXIST SIX INCHES IN FROM EACH END

THIS DRAWING IS THE PROPERTY OF OMCO AND MAY NOT BE TRACED, USED, OR COPIED IN ANY MANNER WITHOUT THE WRITTEN AUTHORIZATION OF OMCO